

MEMBER ACTION TEAMS

Join a Member Action Team (MAT)
to build power at your worksite at

[WFSE.ORG/MAT](https://wfse.org/mat)



Take action on the issues MATs are
fighting for at

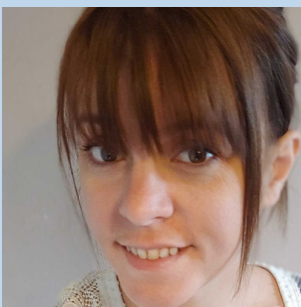
[WFSE.ORG/Take-Action](https://wfse.org/take-action)



The **Rainier School** MAT helped prevent the irresponsible closure of this historic home to 300 clients with developmental disabilities.



WFSE members at **Yakima Valley School** are using their MAT to meet with management and address safety concerns, short staffing, mandatory overtime and the safety and health of residents. Additionally, they are introducing the union difference to new employees through new employee orientations.



The **SOLA Spokane** MAT helped protect their coworkers' vacation days by getting 30 members to sign onto a grievance within a couple hours.



"I hope by being part of a MAT people learn that we are the union."

Melanie, MAT Leader
Department of Ecology



"MATs are great for folks who want to support our union without being as involved as a shop steward."

Riki, MAT Leader
Western State Hospital



"Our MAT made sure we had leaders in every department and created a video encouraging our fellow members to get vaccinated."

Nicollette, MAT Captain
DSHS Special Commitment Center